

VIDA

RESIDENCES
DUBAI MARINA





РИВЬЕРА В ГАВАНИ ДУБАЙ МАРИНА

Отправьтесь в плавание из яхт-клуба, порадитесь шоппингу в торговом центре Дубай Марина Молл и насладитесь ужином экстра-класса, развлечениями, услугами престижных отелей, спа-салонов и прочими видами отдыха и оздоровления всего в нескольких шагах!





ВИД НА НЕОБЪЯТНЫЕ ПРОСТОРЫ

Полюбуйтесь потрясающим видом на гавань
Дубай Марина, такого вы еще не видели!

ВОЗМОЖНОСТЬ, ВЫПАДАЮЩАЯ РАЗ В ЖИЗНИ

Насладитесь изысканным сервисом и роскошным стилем жизни отеля VIDA, разнообразием кухни в ресторанах, откройте секреты мореплавания в Сообществе любителей яхтенного туризма.



ГАРМОНИЯ НА ГРАНИ РОСКОШИ

Погрузитесь в обстановку роскоши и откройте
гармонию с окружающим.



ЖИЗНЬ В СТИЛЕ РИВЬЕРА

Жизнь в ярких цветах, стильном дизайне, среди людей разных стран, белых песчаных пляжей, лучших ресторанов, развлечений и досуга.



МОРСКИЕ ОБРАЗЫ

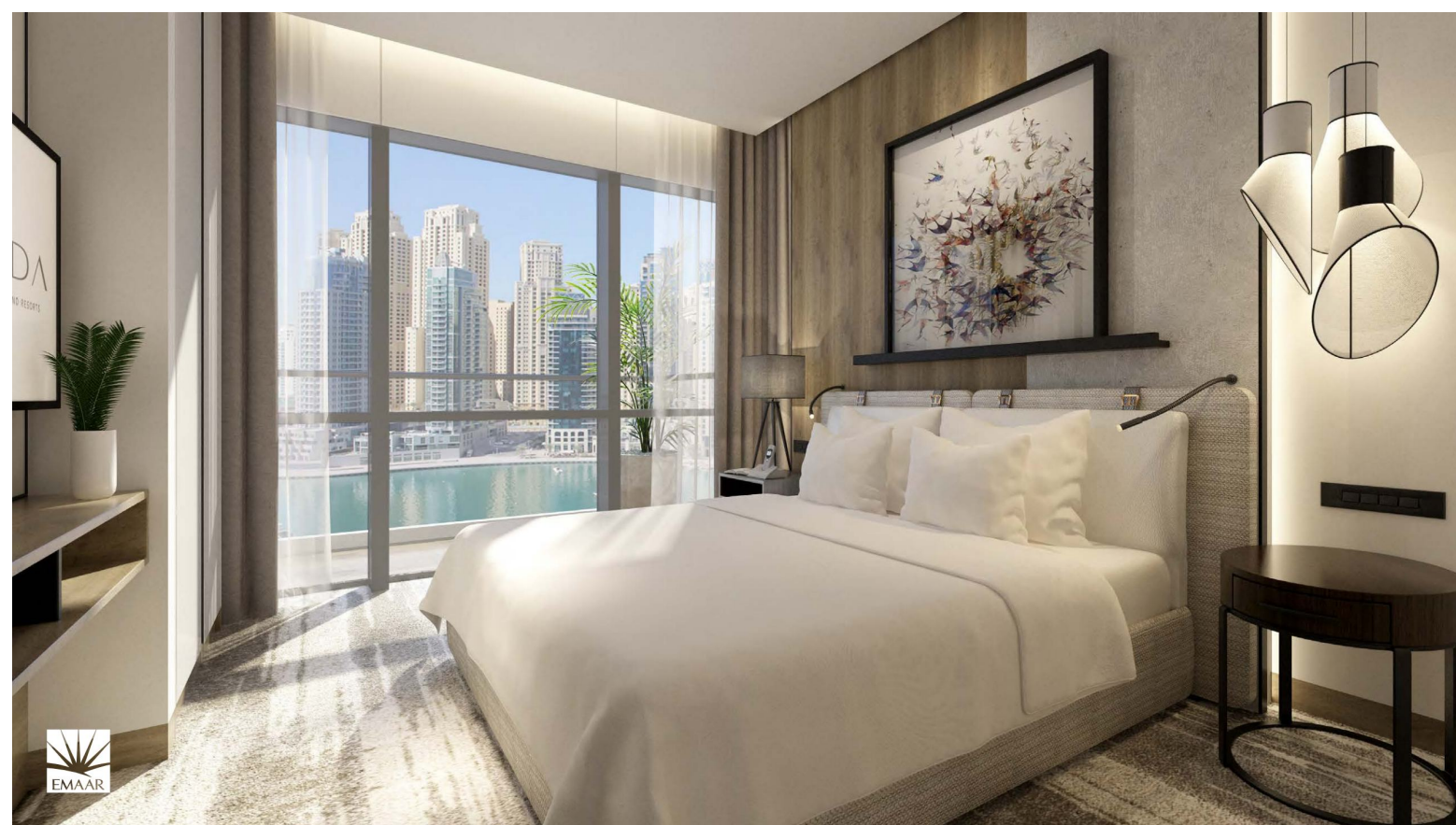
Потрясающая архитектура пропускает свет сквозь стены, придавая жилью насыщенность морскими образами. Стены, обшитые деревянными панелями, подчеркивают историю мореплавания.





НАСЛАДИТЕСЬ
СОЛНЕЧНЫМ СВЕТОМ









VIDA

RESIDENCES
DUBAI MARINA

ПОЭТАЖНЫЙ ПЛАН ЗДАНИЯ
АПАРТАМЕНТЫ С 1 СПАЛЬНЕЙ

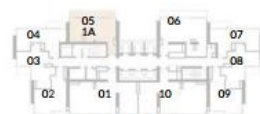


VIDA
RESIDENCES
DUBAI MARINA

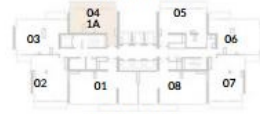


ВИД НА ГАВАНЬ

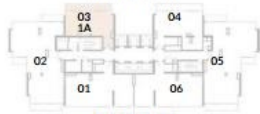
1 Спальня Тип А



ЭТАЖ 14-24



ЭТАЖ 26-48



ЭТАЖ 49-54

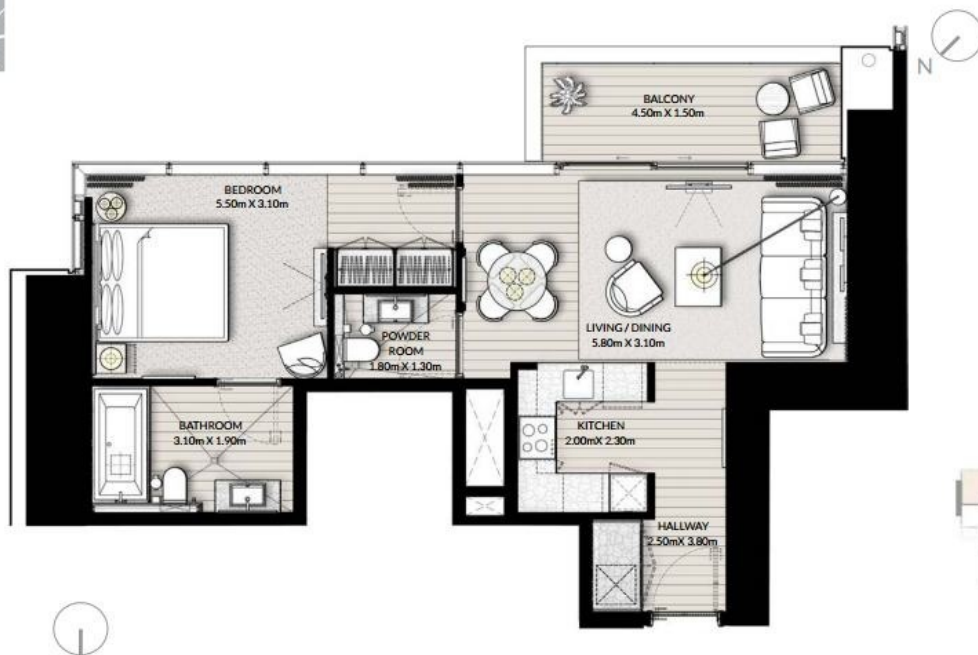
Этаж	14-19	20-24	26-30	31-41	43-48	49-54
Жилая площадь	820.10 ft ² / 76.19 m ²	821.82 ft ² / 76.35 m ²	827.31 ft ² / 76.86 m ²	827.64 ft ² / 76.89 m ²	837.54 ft ² / 77.81 m ²	838.51 ft ² / 77.90 m ²
Площадь балкона	178.79 ft ² / 16.61 m ²	178.79 ft ² / 16.61 m ²	178.68 ft ² / 16.60 m ²	178.68 ft ² / 16.60 m ²	178.68 ft ² / 16.60 m ²	178.79 ft ² / 16.61 m ²
Общая площадь	998.89 ft ² / 92.80 m ²	1000.61 ft ² / 92.96 m ²	1005.99 ft ² / 93.46 m ²	1006.32 ft ² / 93.49 m ²	1016.22 ft ² / 94.41 m ²	1017.30 ft ² / 94.51 m ²

ЭТАЖ 14-24	БЛОК 05
ЭТАЖ 26-48	БЛОК 04
ЭТАЖ 49-54	БЛОК 03

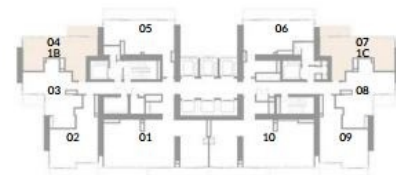
1. All dimensions are in imperial and metric, and measured to structural elements and exclude wall finishes and construction tolerances. 2. All materials, dimensions, and drawings are approximate only. 3. Information is subject to change without notice, at developer's absolute discretion. 4. Actual area may vary from the stated area. 5. Drawings not to scale. 6. All images used are for illustrative purposes only and do not represent the actual size, features, specifications, fittings, and furnishings. 7. The developer reserves the right to make revisions/alterations, at its absolute discretion, without any liability whatsoever.



VIDA
RESIDENCES
DUBAI MARINA



1 Спальня
Тип В и С



ВИД НА ГАВАНЬ

Этаж	14-19	20-24
Жилая площадь	670.16 ft ² / 62.26 m ²	677.70 ft ² / 62.96 m ²
Площадь балкона	76.32 ft ² / 7.09 m ²	75.56 ft ² / 7.02 m ²
Общая площадь	746.48 ft ² / 69.35 m ²	753.26 ft ² / 69.98 m ²

ЭТАЖ 14-24 БЛОК 04 и 07

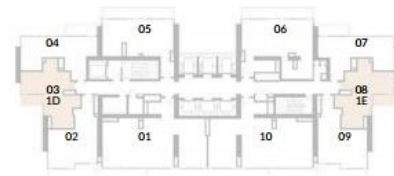
1. All dimensions are in imperial and metric, and measured to structural elements and exclude wall finishes and construction tolerances. 2. All materials, dimensions, and drawings are approximate only. 3. Information is subject to change without notice, at developer's absolute discretion. 4. Actual area may vary from the stated area. 5. Drawings not to scale. 6. All images used are for illustrative purposes only and do not represent the actual size, features, specifications, fittings, and furnishings. 7. The developer reserves the right to make revisions/ alterations, at its absolute discretion, without any liability whatsoever.



VIDA
RESIDENCES
DUBAI MARINA



1 Спальня
Тип D и E



ВИД НА ГАВАНЬ

Этаж	14-19	20-24
Жилая площадь	630.77 ft ² / 58.60 m ²	637.01 ft ² / 59.18 m ²
Площадь балкона	53.71 ft ² / 4.99 m ²	53.71 ft ² / 4.99 m ²
Общая площадь	684.48 ft ² / 63.59 m ²	690.72 ft ² / 64.17 m ²

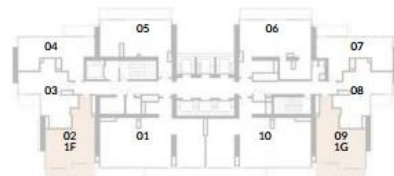
ЭТАЖ 14-24 БЛОК 03 и 08

1. All dimensions are in imperial and metric, and measured to structural elements and exclude wall finishes and construction tolerances. 2. All materials, dimensions, and drawings are approximate only. 3. Information is subject to change without notice, at developer's absolute discretion. 4. Actual area may vary from the stated area. 5. Drawings not to scale. 6. All images used are for illustrative purposes only and do not represent the actual size, features, specifications, fittings, and furnishings. 7. The developer reserves the right to make revisions/ alterations, at its absolute discretion, without any liability whatsoever.



VIDA
RESIDENCES
DUBAI MARINA

1 Спальня Тип А и G



ВИД НА ГАВАНЬ

Этаж	14-19	20-24
Жилая площадь	682.32 ft ² / 63.39m ²	697.61 ft ² / 64.81m ²
Площадь балкона	150.80 ft ² / 14.01 m ²	150.80 ft ² / 14.01m ²
Общая площадь	833.12 ft ² / 77.40 m ²	848.41 ft ² / 78.82 m ²

ЭТАЖ 14-24

БЛОК 02 и 09

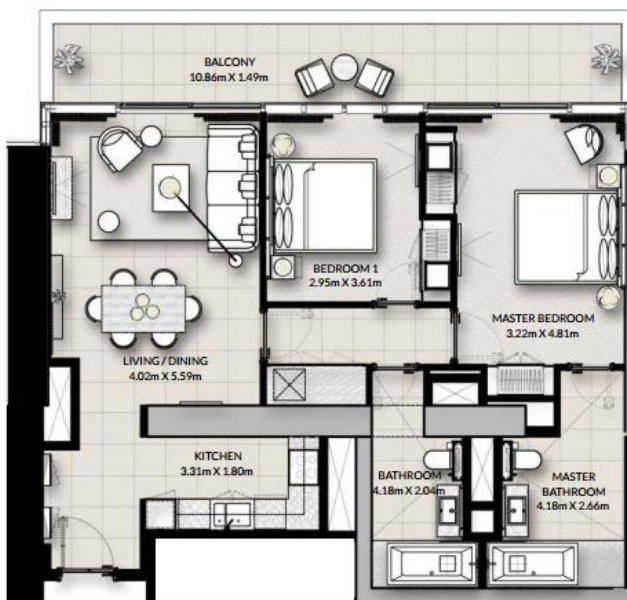
1. All dimensions are in imperial and metric, and measured to structural elements and exclude wall finishes and construction tolerances. 2. All materials, dimensions, and drawings are approximate only. 3. Information is subject to change without notice, at developer's absolute discretion. 4. Actual area may vary from the stated area. 5. Drawings not to scale. 6. All images used are for illustrative purposes only and do not represent the actual size, features, specifications, fittings, and furnishings. 7. The developer reserves the right to make revisions/ alterations, at its absolute discretion, without any liability whatsoever.

ПОЭТАЖНЫЙ ПЛАН ЗДАНИЯ
АПАРТАМЕНТЫ С 2 СПАЛЬНЯМИ

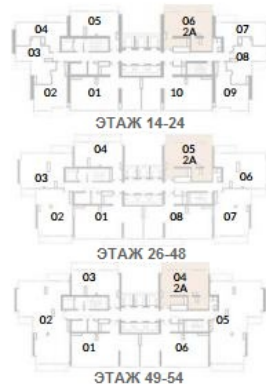


VIDA
RESIDENCES
DUBAI MARINA

2 Спальни Тип А



ВИД НА ГАВАНЬ



Этаж	14-19	20-24	26-30	31-41	43-48	49-54
Жилая площадь	1073.05 ft ² / 99.69 m ²	1076.61 ft ² / 100.02 m ²	1078.01 ft ² / 100.15 m ²	1076.61 ft ² / 100.02 m ²	1082.31 ft ² / 100.55 m ²	1083.50 ft ² / 100.66 m ²
Площадь балкона	178.79 ft ² / 16.61 m ²	178.79 ft ² / 16.61 m ²	178.68 ft ² / 16.60 m ²	178.68 ft ² / 16.60 m ²	178.68 ft ² / 16.60 m ²	178.79 ft ² / 16.61 m ²
Общая площадь	1251.84 ft ² / 116.30 m ²	1255.40 ft ² / 116.63 m ²	1256.69 ft ² / 116.75 m ²	1255.29 ft ² / 116.62 m ²	1260.99 ft ² / 117.15 m ²	1262.29 ft ² / 117.27 m ²

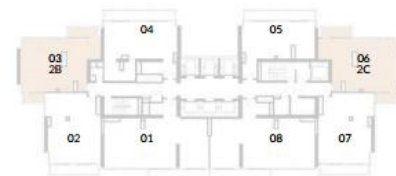
ЭТАЖ 14-24	БЛОК 06
ЭТАЖ 26-48	БЛОК 05
ЭТАЖ 49-54	БЛОК 04

1. All dimensions are in imperial and metric, and measured to structural elements and exclude wall finishes and construction tolerances. 2. All materials, dimensions, and drawings are approximate only. 3. Information is subject to change without notice, at developer's absolute discretion. 4. Actual area may vary from the stated area. 5. Drawings not to scale. 6. All images used are for illustrative purposes only and do not represent the actual size, features, specifications, fittings, and furnishings. 7. The developer reserves the right to make revisions/alterations, at its absolute discretion, without any liability whatsoever.



VIDA
RESIDENCES
DUBAI MARINA

2 Спальни
Тип В и С



ВИД НА ГАВАНЬ

Этаж	26-30	31-41	43-48
Жилая площадь	1023.86 ft ² / 95.12 m ²	1028.60 ft ² / 95.56 m ²	1034.73 ft ² / 96.13 m ²
Площадь балкона	129.71 ft ² / 12.05 m ²	129.71 ft ² / 12.05 m ²	129.71 ft ² / 12.05 m ²
Общая площадь	1153.57 ft ² / 107.17 m ²	1158.31 ft ² / 107.61 m ²	1164.44 ft ² / 108.18 m ²

ЭТАЖ 26-48

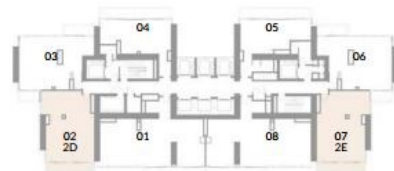
БЛОК 03 и 06

1. All dimensions are in imperial and metric, and measured to structural elements and exclude wall finishes and construction tolerances. 2. All materials, dimensions, and drawings are approximate only. 3. Information is subject to change without notice, at developer's absolute discretion. 4. Actual area may vary from the stated area. 5. Drawings not to scale. 6. All images used are for illustrative purposes only and do not represent the actual size, features, specifications, fittings, and furnishings. 7. The developer reserves the right to make revisions/ alterations, at its absolute discretion, without any liability whatsoever.



VIDA
RESIDENCES
DUBAI MARINA

2 Спальни Тип D и E



ВИД НА ГАВАНЬ

Этаж	26-30	31-41	43-48
Жилая площадь	979.41 ft ² / 90.99 m ²	988.77 ft ² / 91.86 m ²	996.52 ft ² / 92.58 m ²
Площадь балкона	122.06 ft ² / 11.34 m ²	122.06 ft ² / 11.34 m ²	122.06 ft ² / 11.34 m ²
Общая площадь	1101.47 ft ² / 102.33 m ²	1110.83 ft ² / 103.20 m ²	1118.58 ft ² / 103.92 m ²

ЭТАЖ 26-48

БЛОК 02 и 07

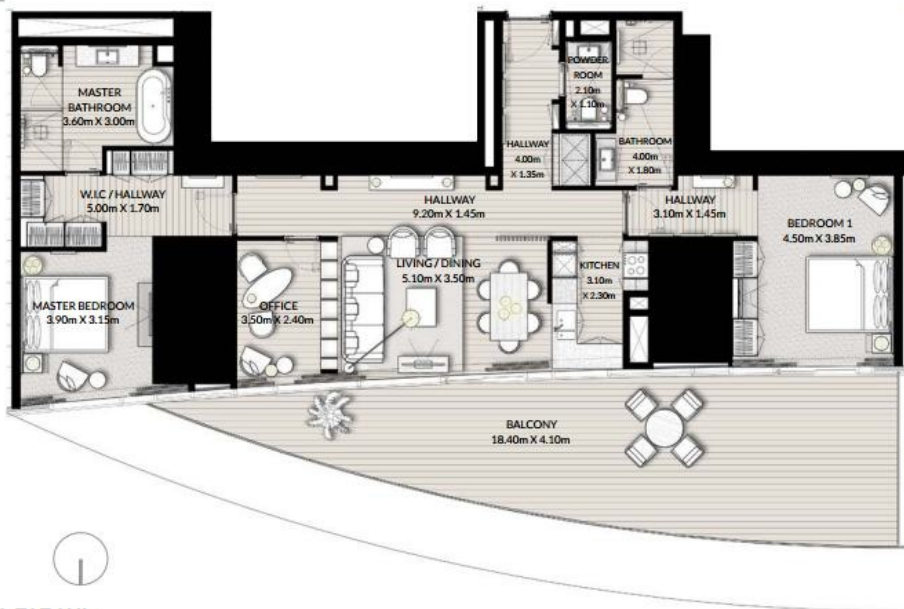
1. All dimensions are in imperial and metric, and measured to structural elements and exclude wall finishes and construction tolerances. 2. All materials, dimensions, and drawings are approximate only. 3. Information is subject to change without notice, at developer's absolute discretion. 4. Actual area may vary from the stated area. 5. Drawings not to scale. 6. All images used are for illustrative purposes only and do not represent the actual size, features, specifications, fittings, and furnishings. 7. The developer reserves the right to make revisions/ alterations, at its absolute discretion, without any liability whatsoever.



VIDA
RESIDENCES
DUBAI MARINA



2 Спальни Тип F



ВИД НА ГАВАНЬ

Этаж	2
Жилая площадь	1513.51 ft ² / 140.61 m ²
Площадь балкона	538.09 ft ² / 49.99 m ²
Общая площадь	2051.60 ft ² / 190.60 m ²

ЭТАЖ 2

БЛОК 01

1. All dimensions are in imperial and metric, and measured to structural elements and exclude wall finishes and construction tolerances. 2. All materials, dimensions, and drawings are approximate only. 3. Information is subject to change without notice, at developer's absolute discretion. 4. Actual area may vary from the stated area. 5. Drawings not to scale. 6. All images used are for illustrative purposes only and do not represent the actual size, features, specifications, fittings, and furnishings. 7. The developer reserves the right to make revisions/ alterations, at its absolute discretion, without any liability whatsoever.



VIDA
RESIDENCES
DUBAI MARINA

2 Спальни Тип G



ВИД НА ГАВАНЬ



Этаж	2
Жилая площадь	1536.55 ft ² / 142.75 m ²
Площадь балкона	522.16 ft ² / 48.51 m ²
Общая площадь	2058.71 ft ² / 191.26 m ²

ЭТАЖ 2

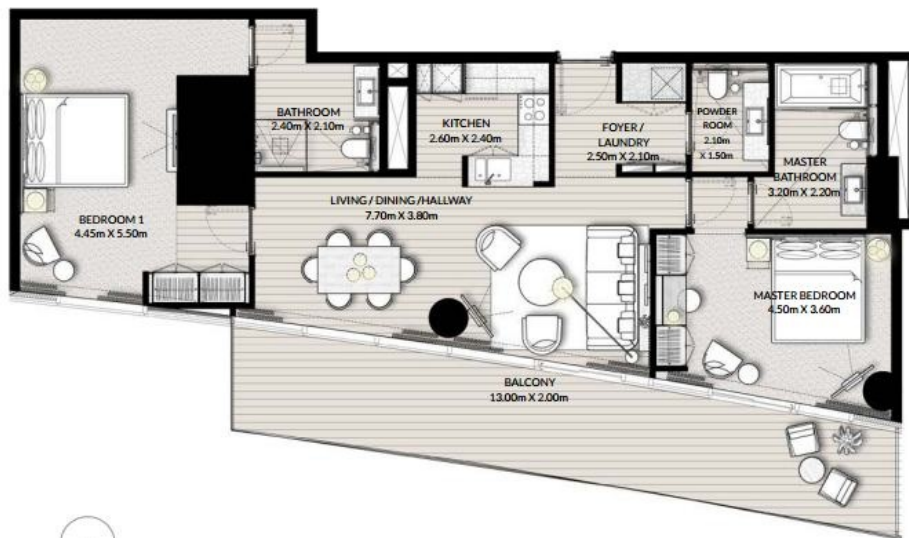
БЛОК 02

1. All dimensions are in imperial and metric, and measured to structural elements and exclude wall finishes and construction tolerances. 2. All materials, dimensions, and drawings are approximate only. 3. Information is subject to change without notice, at developer's absolute discretion. 4. Actual area may vary from the stated area. 5. Drawings not to scale. 6. All images used are for illustrative purposes only and do not represent the actual size, features, specifications, fittings, and furnishings. 7. The developer reserves the right to make revisions/ alterations, at its absolute discretion, without any liability whatsoever.



VIDA
RESIDENCES
DUBAI MARINA

2 Спальни Тип Н



ВИД НА ГАВАНЬ



Этаж	2
Жилая площадь	1100.18 ft ² / 102.21 m ²
Площадь балкона	240.25 ft ² / 22.32 m ²
Общая площадь	1340.43 ft ² / 124.53 m ²

ЭТАЖ 2

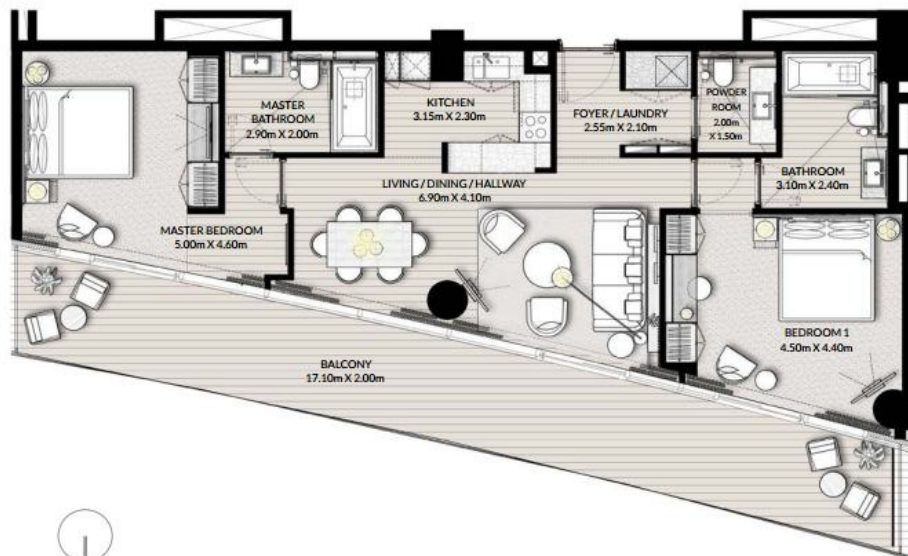
БЛОК 03

1. All dimensions are in imperial and metric, and measured to structural elements and exclude wall finishes and construction tolerances. 2. All materials, dimensions, and drawings are approximate only. 3. Information is subject to change without notice, at developer's absolute discretion. 4. Actual area may vary from the stated area. 5. Drawings not to scale. 6. All images used are for illustrative purposes only and do not represent the actual size, features, specifications, fittings, and furnishings. 7. The developer reserves the right to make revisions/ alterations, at its absolute discretion, without any liability whatsoever.



VIDA
RESIDENCES
DUBAI MARINA

2 Спальни Тип I



ВИД НА ГАВАНЬ

Этаж	2-5
Жилая площадь	1043.56 ft ² / 96.95m ²
Площадь балкона	322.38 ft ² / 29.95 m ²
Общая площадь	1365.94 ft ² / 126.90 m ²

ЭТАЖ 2-5

БЛОК 04

1. All dimensions are in imperial and metric, and measured to structural elements and exclude wall finishes and construction tolerances. 2. All materials, dimensions, and drawings are approximate only. 3. Information is subject to change without notice, at developer's absolute discretion. 4. Actual area may vary from the stated area. 5. Drawings not to scale. 6. All images used are for illustrative purposes only and do not represent the actual size, features, specifications, fittings, and furnishings. 7. The developer reserves the right to make revisions/ alterations, at its absolute discretion, without any liability whatsoever.



VIDA
RESIDENCES
DUBAI MARINA



2 Спальни Тип J



ВИД НА ГАВАНЬ

Этаж	3-5
Жилая площадь	1513.51 ft ² / 140.61 m ²
Площадь балкона	358.76 ft ² / 33.33 m ²
Общая площадь	1872.27 ft ² / 173.94 m ²

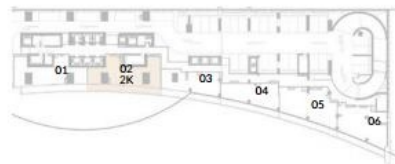
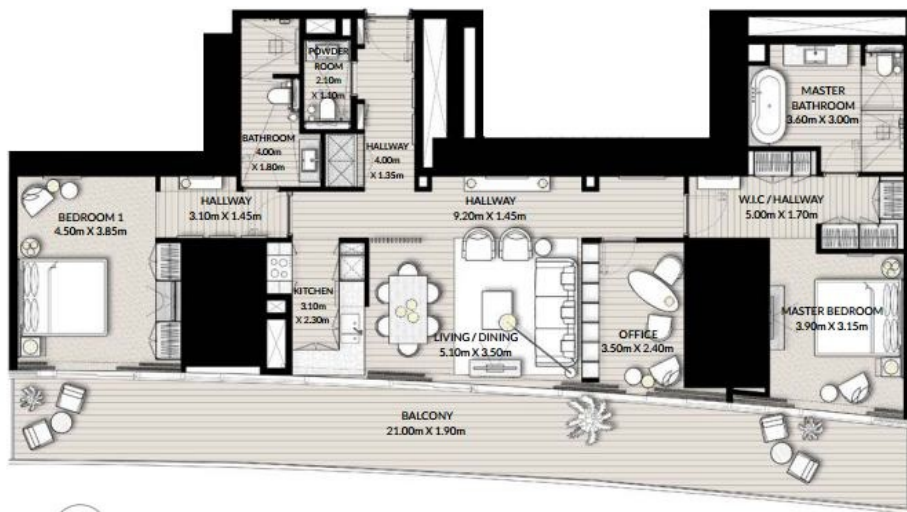
ЭТАЖ 3-5

БЛОК 01

1. All dimensions are in imperial and metric, and measured to structural elements and exclude wall finishes and construction tolerances. 2. All materials, dimensions, and drawings are approximate only. 3. Information is subject to change without notice, at developer's absolute discretion. 4. Actual area may vary from the stated area. 5. Drawings not to scale. 6. All images used are for illustrative purposes only and do not represent the actual size, features, specifications, fittings, and furnishings. 7. The developer reserves the right to make revisions/ alterations, at its absolute discretion, without any liability whatsoever.



VIDA
RESIDENCES
DUBAI MARINA



ВИД НА ГАВАНЬ

Этаж	3-5
Жилая площадь	1536.55 ft ² / 142.75 m ²
Площадь балкона	397.73 ft ² / 36.95 m ²
Общая площадь	1934.28 ft ² / 179.70 m ²

ЭТАЖ 3-5

БЛОК 02

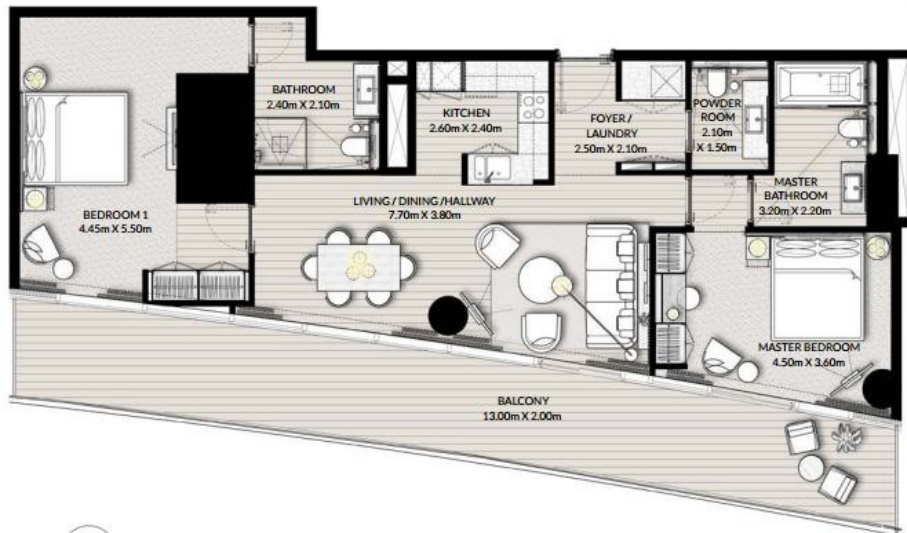
1. All dimensions are in imperial and metric, and measured to structural elements and exclude wall finishes and construction tolerances. 2. All materials, dimensions, and drawings are approximate only. 3. Information is subject to change without notice, at developer's absolute discretion. 4. Actual area may vary from the stated area. 5. Drawings not to scale. 6. All images used are for illustrative purposes only and do not represent the actual size, features, specifications, fittings, and furnishings. 7. The developer reserves the right to make revisions/alterations, at its absolute discretion, without any liability whatsoever.



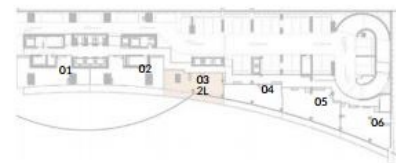
VIDA
RESIDENCES
DUBAI MARINA



2 Спальни Тип L



ВИД НА ГАВАНЬ



Этаж	3-5
Жилая площадь	1100.18 ft ² / 102.21 m ²
Площадь балкона	325.61 ft ² / 30.25 m ²
Общая площадь	1425.79 ft ² / 132.46 m ²

ЭТАЖ 3-5

БЛОК 03

1. All dimensions are in imperial and metric, and measured to structural elements and exclude wall finishes and construction tolerances. 2. All materials, dimensions, and drawings are approximate only. 3. Information is subject to change without notice, at developer's absolute discretion. 4. Actual area may vary from the stated area. 5. Drawings not to scale. 6. All images used are for illustrative purposes only and do not represent the actual size, features, specifications, fittings, and furnishings. 7. The developer reserves the right to make revisions/alterations, at its absolute discretion, without any liability whatsoever.

ПОЭТАЖНЫЙ ПЛАН ЗДАНИЯ
АПАРТАМЕНТЫ С 3 СПАЛЬНЯМИ



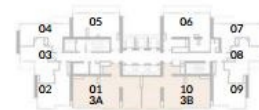
VIDA
RESIDENCES
DUBAI MARINA



3 Спальни Тип А и В



ВИД НА ГАВАНЬ



ЭТАЖ 14-19

Этаж	14-19
Жилая площадь	1516.63 ft ² / 140.90 m ²
Площадь балкона	154.25 ft ² / 14.33 m ²
Общая площадь	1670.88 ft ² / 155.23 m ²

ЭТАЖ 14-19 БЛОК 01 и 10

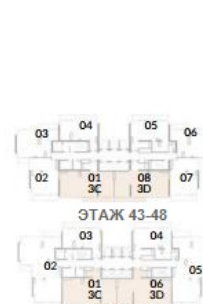
1. All dimensions are in imperial and metric, and measured to structural elements and exclude wall finishes and construction tolerances. 2. All materials, dimensions, and drawings are approximate only. 3. Information is subject to change without notice, at developer's absolute discretion. 4. Actual area may vary from the stated area. 5. Drawings not to scale. 6. All images used are for illustrative purposes only and do not represent the actual size, features, specifications, fittings, and furnishings. 7. The developer reserves the right to make revisions/alterations, at its absolute discretion, without any liability whatsoever.



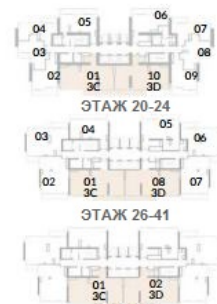
VIDA
RESIDENCES
DUBAI MARINA



ВИД НА ГАВАНЬ



ЭТАЖ 49-54

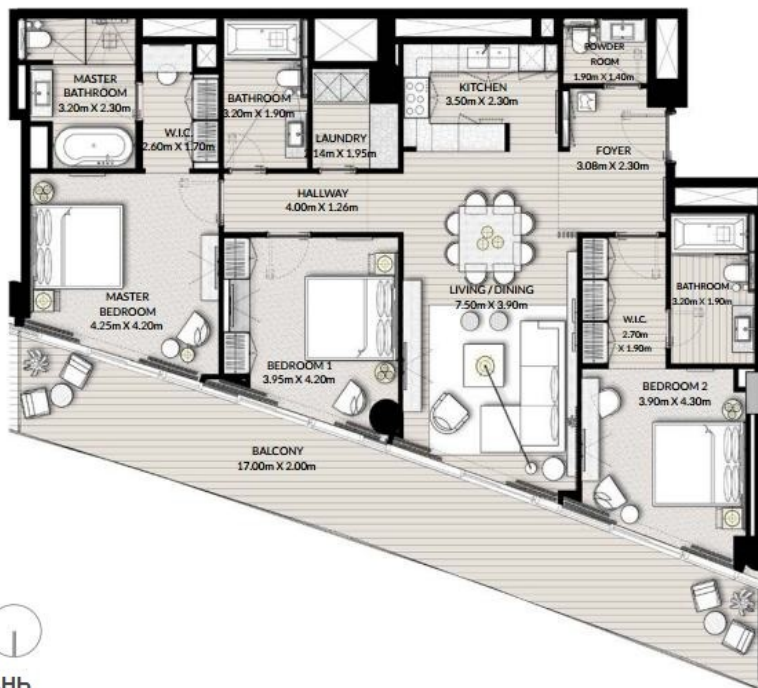


ЭТАЖ 42

Этаж	20-24	26-30	31-41	42-48	49-54
Жилая площадь	1513.41 ft ² / 140.60 m ²	1519.00 ft ² / 141.12 m ²	1519.43 ft ² / 141.16 m ²	1528.26 ft ² / 141.98 m ²	1525.57 ft ² / 141.73 m ²
Площадь балкона	154.25 ft ² / 14.33 m ²	154.25 ft ² / 14.33 m ²	154.25 ft ² / 14.33 m ²	154.25 ft ² / 14.33 m ²	154.25 ft ² / 14.33 m ²
Общая площадь	1667.66 ft ² / 154.93 m ²	1673.25 ft ² / 155.45 m ²	1673.68 ft ² / 155.49 m ²	1682.51 ft ² / 156.31 m ²	1679.82 ft ² / 156.06 m ²

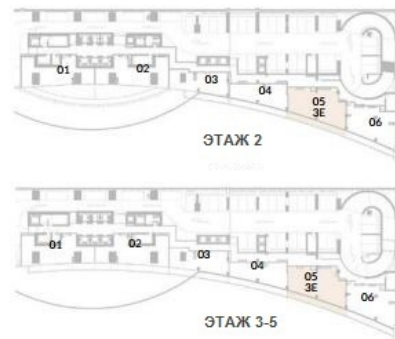
ЭТАЖ 20-24	БЛОК 01 и 10
ЭТАЖ 26-48	БЛОК 01 и 08
ЭТАЖ 42	БЛОК 01 и 02
ЭТАЖ 43-45	БЛОК 01 и 08
ЭТАЖ 49-54	БЛОК 01 и 06

1. All dimensions are in imperial and metric, and measured to structural elements and exclude wall finishes and construction tolerances. 2. All materials, dimensions, and drawings are approximate only. 3. Information is subject to change without notice, at developer's absolute discretion. 4. Actual area may vary from the stated area. 5. Drawings not to scale. 6. All images used are for illustrative purposes only and do not represent the actual size, features, specifications, fittings, and furnishings. 7. The developer reserves the right to make revisions/alterations, at its absolute discretion, without any liability whatsoever.



VIDA
RESIDENCES
DUBAI MARINA

3 Спальни Тип Е



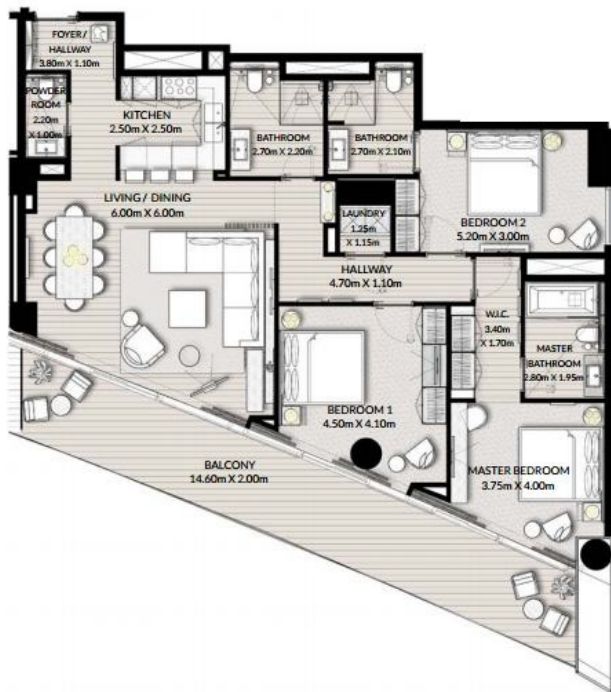
ВИД НА ГАВАНЬ

Этаж	2-5
Жилая площадь	1535.79 ft ² / 142.68 m ²
Площадь балкона	330.77 ft ² / 30.73 m ²
Общая площадь	1866.56 ft ² / 173.41 m ²

ЭТАЖ 2-5

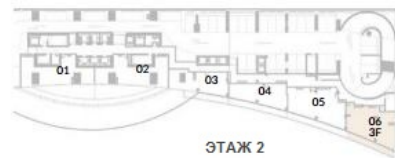
БЛОК 05

1. All dimensions are in imperial and metric, and measured to structural elements and exclude wall finishes and construction tolerances. 2. All materials, dimensions, and drawings are approximate only. 3. Information is subject to change without notice, at developer's absolute discretion. 4. Actual area may vary from the stated area. 5. Drawings not to scale. 6. All images used are for illustrative purposes only and do not represent the actual size, features, specifications, fittings, and furnishings. 7. The developer reserves the right to make revisions/alterations, at its absolute discretion, without any liability whatsoever.

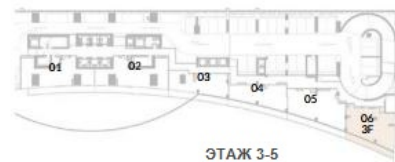


VIDA
RESIDENCES
DUBAI MARINA

3 Спальни Тип F



ЭТАЖ 2



ЭТАЖ 3-5

ВИД НА ГАВАНЬ

Этаж	2-5
Жилая площадь	1426.65 ft ² / 132.54 m ²
Площадь балкона	293.21 ft ² / 27.24 m ²
Общая площадь	1719.86 ft ² / 159.78 m ²

ЭТАЖ 2-5

БЛОК 06

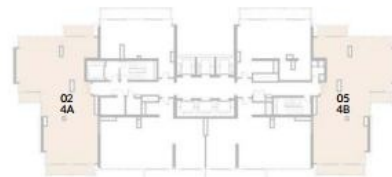
1. All dimensions are in imperial and metric, and measured to structural elements and exclude wall finishes and construction tolerances. 2. All materials, dimensions, and drawings are approximate only. 3. Information is subject to change without notice, at developer's absolute discretion. 4. Actual area may vary from the stated area. 5. Drawings not to scale. 6. All images used are for illustrative purposes only and do not represent the actual size, features, specifications, fittings, and furnishings. 7. The developer reserves the right to make revisions/alterations, at its absolute discretion, without any liability whatsoever.

ПОЭТАЖНЫЙ ПЛАН ЗДАНИЯ
АПАРТАМЕНТЫ С 4 СПАЛЬНЯМИ



VIDA
RESIDENCES
DUBAI MARINA

4 Спальни Тип А и В



ВИД НА ГАВАНЬ

Этаж	49-54
Жилая площадь	2082.39 ft ² / 193.46 m ²
Площадь балкона	251.12 ft ² / 23.33 m ²
Общая площадь	2333.51 ft ² / 216.79 m ²

ЭТАЖ 49-54

БЛОК 02 и 05

1. All dimensions are in imperial and metric, and measured to structural elements and exclude wall finishes and construction tolerances. 2. All materials, dimensions, and drawings are approximate only. 3. Information is subject to change without notice, at developer's absolute discretion. 4. Actual area may vary from the stated area. 5. Drawings not to scale. 6. All images used are for illustrative purposes only and do not represent the actual size, features, specifications, fittings, and furnishings. 7. The developer reserves the right to make revisions/alterations, at its absolute discretion, without any liability whatsoever.



VIDA
RESIDENCES
DUBAI MARINA



4 Спальни Тип С Пентхаус



ВИД НА ГАВАНЬ

Этаж	55-56
Жилая площадь	2057.41 ft ² / 191.14 m ²
Площадь балкона	1038.50 ft ² / 96.48 m ²
Общая площадь	3095.91 ft ² / 287.62 m ²

ЭТАЖ 55-56

БЛОК 01

1. All dimensions are in imperial and metric, and measured to structural elements and exclude wall finishes and construction tolerances. 2. All materials, dimensions, and drawings are approximate only. 3. Information is subject to change without notice, at developer's absolute discretion. 4. Actual area may vary from the stated area. 5. Drawings not to scale. 6. All images used are for illustrative purposes only and do not represent the actual size, features, specifications, fittings, and furnishings. 7. The developer reserves the right to make revisions/alterations, at its absolute discretion, without any liability whatsoever.



VIDA
RESIDENCES
DUBAI MARINA



4 Спальни Тип D Пентхаус



ВИД НА ГАВАНЬ



Этаж	55-56
Жилая площадь	2121.14 ft ² / 197.06 m ²
Площадь балкона	1394.68 ft ² / 129.57 m ²
Общая площадь	3515.82 ft ² / 326.63 m ²

ЭТАЖ 55-56

БЛОК 02

1. All dimensions are in imperial and metric, and measured to structural elements and exclude wall finishes and construction tolerances. 2. All materials, dimensions, and drawings are approximate only. 3. Information is subject to change without notice, at developer's absolute discretion. 4. Actual area may vary from the stated area. 5. Drawings not to scale. 6. All images used are for illustrative purposes only and do not represent the actual size, features, specifications, fittings, and furnishings. 7. The developer reserves the right to make revisions/alterations, at its absolute discretion, without any liability whatsoever.

VIDA

RESIDENCES
DUBAI MARINA

